



DATA SHEET // MICHIGAN SHAFT SEALS

Michigan's ERCM, GV & LIP series provide solutions for every propeller shaft sealing problem. Our seals are suitable for military, commercial and recreational applications and can be used with equivalent reliability as a rudder stock shaft seal.

MMP

MICHIGAN MARINE PROPULSION
— INTERNATIONAL —

A SOLUTION FOR EVERY PROPULSION PROBLEM

Ercem Classic

Michigan-Ercem Classic system operates on the simple principal of creating a perfect seal between a rotating stainless steel ring and a static carbon ring. It is easily fitted and virtually maintenance free.

The stainless steel ring is installed on the propeller shaft and is fitted with two 'O' rings to ensure total sealing reliability. The carbon ring is fixed to the sterntube or shaft log via a convoluted rubber bellow.

At final installation the stainless steel ring is used to compress the bellow to the required setting allowing the faces of both rings to be continually in contact and offset any fore or aft movement of the shaft line.



// GV WATER INJECTION

GV Model

Our GV model has the same characteristics and performance as the Classic, but is designed with a built in water inlet connection.

LIP Seals

Our LIP seal series are the perfect alternative for sailing yachts and small motor boats. They are quick and easy to install, offer a great space saving solution and are available with or without a water injection fitment.

APPLICATIONS

From high speed vessels, to sailing craft and professional ships, our seals are suitable for military, commercial and recreational applications and can be used with equivalent reliability as a rudder stock shaft seal.

The seals are simple and easy to fit to either a new build construction or alternatively as a retro-fit replacement for conventional stuffing boxes. For those applications that require a water feed we can supply a plumbing kit and as part of the accessories on offer a seal maintenance kit is available from our spares department.

MATERIALS

For smaller diameter seals the convoluted bellow is moulded in neoprene. For diameters above 40mm and for the complete GV series the bellow is supplied in a reinforced Kevlar non-combustible material which has a strong resistance to petrochemical products, high temperatures and accidental cuts and strains.

The static carbon ring is moulded with a graphite impregnated resin that enhances wear resistance, prolongs longevity and can withstand temperatures up to 260 degrees Celsius. It is CNC machined to a very high tolerance micron finish. The rotating ring is built in stainless steel 316L and is CNC machined to very exacting tolerances.

PRODUCT SIZE & RANGE

ERCER, GV and LIP Michigan shaft seal series covers the diameter range from 22mm to 115mm [1" to 4 1/2"]. The ERCER/GV seal design will tolerate some shaft misalignment and eliminates any shaft wear. It is an ecological friendly system and no greasing is required.



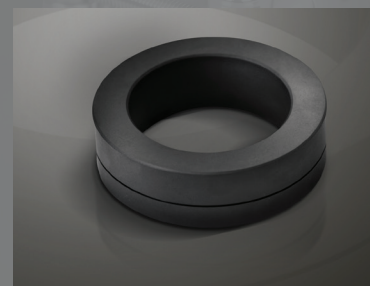
// LIP SEAL

WHY FIT A MICHIGAN SHAFT SEAL?

- ▷ Low maintenance, cost effective, easy to fit, dripless operation.
- ▷ Kevlar reinforced bellows.
- ▷ Effective seal created even with some axial misalignment.
- ▷ CNC machined components.
- ▷ Full range of service and spare parts.
- ▷ Large warehouse inventory.
- ▷ More than 20 years field operation with Coast Guard and Navy.

MICHIGAN WHEEL WAS ESTABLISHED OVER 100 YEARS AGO – THE BUSINESS WAS BUILT ON A FUNDAMENTAL PRINCIPLE OF ENGINEERING EXCELLENCE AND EXPERTISE.

TODAY WE CONTINUE TO FOCUS ON THESE VALUES AND SUPPORTED BY OUTSTANDING DESIGN TECHNIQUES AND A DIVERSE PRODUCT RANGE, WE OFFER A PROPELLER AND PROPULSION SERVICE THAT IS GLOBALLY UNRIVALLED.



MMP

MICHIGAN MARINE PROPULSION
INTERNATIONAL

USA - Michigan Wheel Marine
1501 Buchanan Ave SW
Grand Rapids,
MI 49507, USA
Phone: + 1 616 452-6941
Fax: + 1 616 247-0227
E-mail: info@miwheel.com
www.miwheel.com

EUROPE - Michigan Marine Propulsion
Unit C1 (B), Pottery Road
Kingsteignton, Newton Abbot
Devon, England TQ12 3BN
Phone: + 44 1626 351723
Fax: + 44 1626 351724
E-mail: info@mmp-i.com
www.mmp-i.com

MIDDLE EAST - Michigan Marine Propulsion
P.O. Box 54805, Show Room 7
DY-1, Al Jadaf Ship Docking Yard
Dubai, United Arab Emirates.
Phone: + 971 4 3243867
Fax: + 971 4 3243868
E-mail: info@mmp-i.com
www.mmp-i.com