



## DATA SHEET // ROPE CUTTERS & PROPELLER PULLERS

To complement our extensive propulsion package we design, manufacture and supply those extra components that make operation of the system run smoothly and also assist in the installation and maintenance of the propulsion line.

# MMP

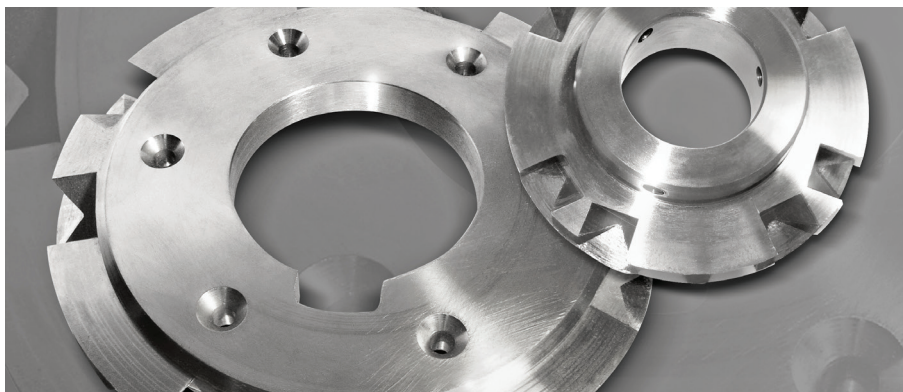
MICHIGAN MARINE PROPULSION  
— INTERNATIONAL —

## MICHIGAN SHAFTLINE EXTRAS

Included in this offering are a series of standard and custom designed rope cutters and a very simple manual puller that quickly and easily removes the propeller from the shaft.

## THE ROPE CUTTER

The rope cutter is a significant safety benefit and helps to protect the shaft line against damage. The Michigan range is available for both recreational and commercial vessels. Our unique design offers a superior cutting action and eliminates the vibrations and shocks that are often associated with the scissor or chopper style cutters. It also significantly reduces the cavitation potential linked to other disc type cutters.



There are no moving parts to service or maintain, installation is very simple and no special tools are required.

All cutters are built from a stainless steel 316L blank and are CNC machined to ensure repeatable accuracy and importantly to maintain the distinctive cutter configuration.

The standard series recreational cutter is available to suit propeller shaft diameters up to 60mm (2 1/2") and for the custom designed commercial cutter up to 110mm (4 1/2") diameter. The standard models are fixed directly to the propeller shaft and positioned between the aft bearing and forward face of propeller. The custom series are fitted to the propeller hub and are individually machined with fixing holes to suit the face of the propeller.

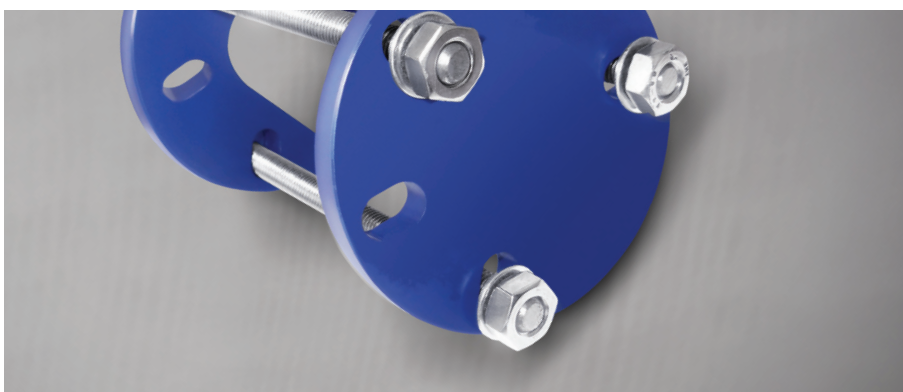
## THE PROPELLER PULLER

The Michigan Puller quickly and safely removes propellers and eliminates any potential damage that can be caused by using inappropriate tools.

They are an indispensable aid for commercial divers, boat owners and marine service departments and our simple

design can even be used underwater. Any vessel with a puller aboard can avoid costly, aggravating and time-consuming delays due to a bent or damaged propeller.

Our standard pullers are available to suit shaft diameters from 25mm to 60mm (1" to 2 1/2"), but other custom built sizes are manufactured to suit specific applications.

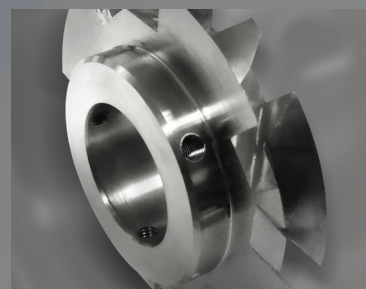


## WHY A MICHIGAN CUTTER OR PULLER?

- ▷ Protects the propeller and shaft line against damage.
- ▷ Minimise repair and maintenance bills.
- ▷ Easy to fit, no special tools required.
- ▷ Built in stainless steel 316L.
- ▷ CNC machined to maintain distinctive cutter configuration.
- ▷ Unique cutting action, eliminates vibrations and shocks.
- ▷ Safe and simple removal of propeller.
- ▷ Large warehouse inventory.

MICHIGAN WHEEL WAS ESTABLISHED OVER 100 YEARS AGO – THE BUSINESS WAS BUILT ON A FUNDAMENTAL PRINCIPLE OF ENGINEERING EXCELLENCE AND EXPERTISE.

TODAY WE CONTINUE TO FOCUS ON THESE VALUES AND SUPPORTED BY OUTSTANDING DESIGN TECHNIQUES AND A DIVERSE PRODUCT RANGE, WE OFFER A PROPELLER AND PROPULSION SERVICE THAT IS GLOBALLY UNRIVALLED.



**MMP**  
MICHIGAN MARINE PROPULSION  
INTERNATIONAL

**USA - Michigan Wheel Marine**  
1501 Buchanan Ave SW  
Grand Rapids,  
MI 49507, USA  
Phone: + 1 616 452-6941  
Fax: + 1 616 247-0227  
E-mail: [info@miwheel.com](mailto:info@miwheel.com)  
[www.miwheel.com](http://www.miwheel.com)

**EUROPE - Michigan Marine Propulsion**  
Unit C1 (B), Pottery Road  
Kingsteignton, Newton Abbot  
Devon, England TQ12 3BN  
Phone: + 44 1626 351723  
Fax: + 44 1626 351724  
E-mail: [info@mmp-i.com](mailto:info@mmp-i.com)  
[www.mmp-i.com](http://www.mmp-i.com)

**MIDDLE EAST - Michigan Marine Propulsion**  
P.O. Box 54805, Show Room 7  
DY-1, Al Jadaf Ship Docking Yard  
Dubai, United Arab Emirates.  
Phone: + 971 4 3243867  
Fax: + 971 4 3243868  
E-mail: [info@mmp-i.com](mailto:info@mmp-i.com)  
[www.mmp-i.com](http://www.mmp-i.com)