

SCOT

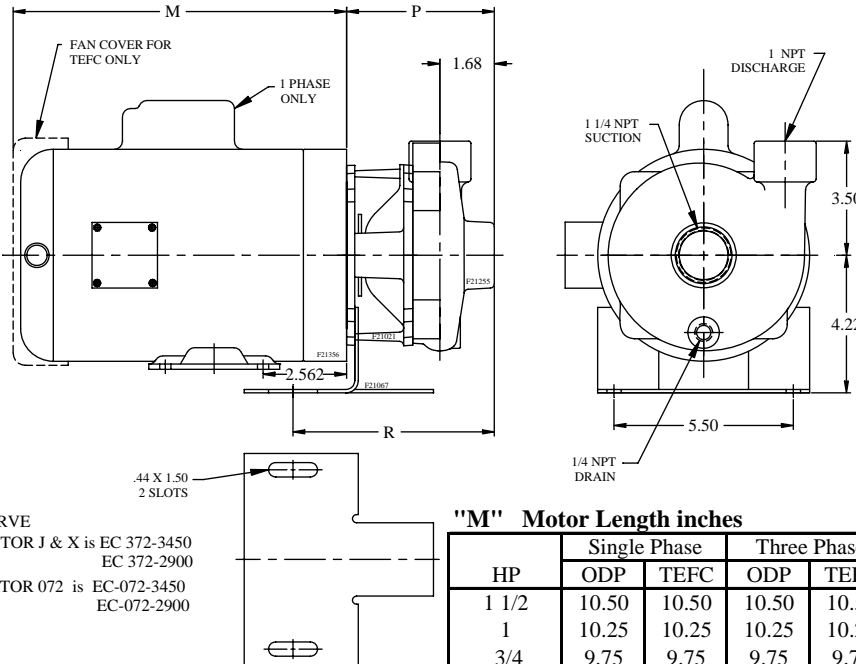
Bronze Marine Motorpump™

1 1/4 x 1 NPT 2 Pole 3450 – 2900 RPM 60 - 50 HZ

Model
47372
MARCH 14, 2014

Model No. 47372 was Model No. 072.

[Click Here to View
SN-47000 Group page
for general specifications
and order information](#)



CURVE
MOTOR J & X is EC 372-3450
EC 372-2900
MOTOR 072 is EC-072-3450
EC-072-2900

"M" Motor Length inches

HP	Single Phase		Three Phase	
	ODP	TEFC	ODP	TEFC
1 1/2	10.50	10.50	10.50	10.50
1	10.25	10.25	10.25	10.25
3/4	9.75	9.75	9.75	9.75
1/2	9.00	9.25	9.00	9.25

Pump Dimensions

Model	Style	P Inches	R inches	Drawing
072	C	5.06	6.75	FK 47072
47372	J	4.53	6.18	FK 47372J
47372	X	5.25	6.90	FK 47372X

Motorpump 072, 47372J, 47372X

Imp	Motor HP		Wt. lbs	Amperes - 3450-2900 RPM TEFC			
	60 Hz	50 Hz		Single Phase		Three Phase	
				60 Hz 230 V	50 Hz 220 V	60 Hz 230 V	50 Hz 380 V
450	1	1	41	6.9	7.6	3.2	1.5
400	3/4	3/4	40	5.4	5.9	2.8	1.3
350	1/2	1/2	36	4.2	4.6	2.2	1.0
325	1/2	1/2	36	4.2	4.6	2.2	1.0

Single phase amps for 115 V 60 Hz is double 230 V amps
Three phase amps for 460 V 60 Hz is one half 230 V amps

- Style C had a stainless steel stub shaft with a NEMA 56 motor
- Style J has a threaded shaft NEMA 56 motor
- Style X has a bronze stub shaft

Suggested Parts Inventory

Model	Seal Kit One seal and install instructions One O-Ring case gasket	Impeller XXX is imp dia. e.g. 325, 350, 400, or 450	Motor Bearings are 6203 for all models 1/3 to 2 HP
072C	189.001.117	131.000.542.XXX	6203 is an industry standard
47372J	189.001.146	189.001.147.XXX	
47372X	189.001.261	189.001.232.XXX	

